

# Newsletter

Marketing and commercial information of **KAN GROUP**

04/2013



## New offer of **KAN-therm**

### - catalogue **03/2013**

With great pleasure we offer you new edition of the catalogue **KAN-therm** 03/2013.

New version of the catalogue has been modified, both from the point of commercial information and product range.

Some changes have been made concerning marking availability of elements as well as product range of each systems has been expanded.

We hope that these changes will greatly facilitate your work with the catalog and allow you to move freely among a wide variety of **KAN-therm** products.

## SPRING NOVELTIES

Here, in brief, we describe you the most important changes in the catalog and present the latest technology solutions offered by **KAN** company.



In the new catalogue edition availability of items has been put in order according to the following legend:

### AVAILABILITY OF ELEMENTS – LEGEND

Availability of items of **KAN-therm** system is described in the catalogue according to the following schedule:

\* on request (realization within 4 weeks)

\*\* availability by individual arrangements

\*\*\* until stocks run out

Item ordering marked with one asterisk (\*), described as „on request“, will be realized within four weeks.

For items marked with two asterisks (\*\*), described as „availability by individual arrangements“, time of order realization should be consulted with employees of Customer service – sellers/trademen will be obliged to provide an estimated date of order realization.

Items marked with three asterisks (\*\*\*) will be available until stocks run out, in such a way will be described elements withdrawn from the offer of **KAN-therm** System.

This rule concerns all price lists/catalogues of **KAN-therm** System.

## SYSTEM **KAN-therm** Push Platinum

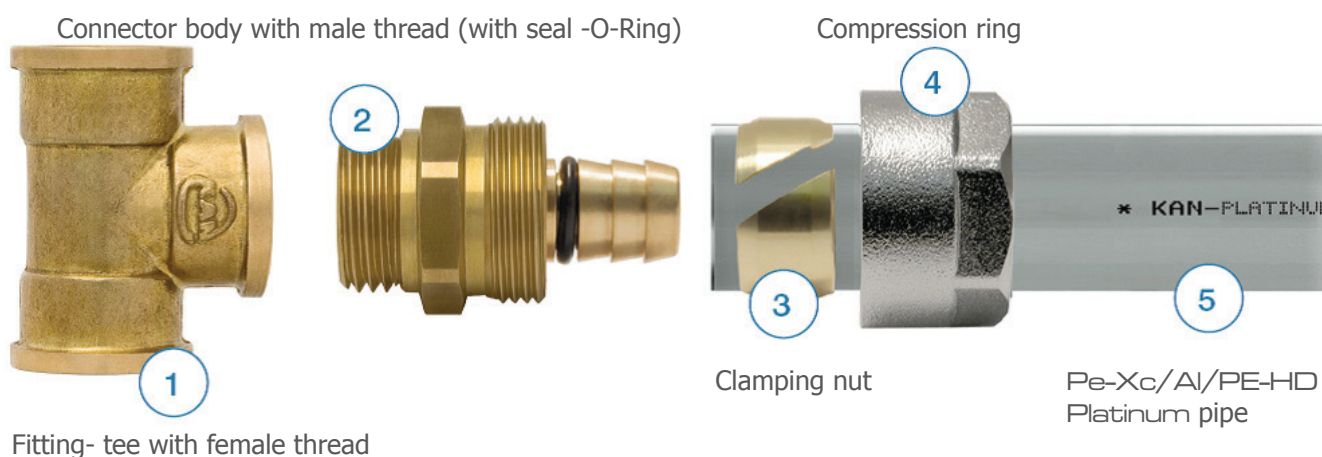
### New elements in the offer

First of all, new catalogue **KAN-therm** 03/2013 is a whole group of new products implemented to **KAN-therm** offer: **KAN-therm** Push Platinum System is the youngest child in **KAN-therm** family that is why its continuous development is the main task for **KAN** constructors. Advanced development work on additional elements of this system has given us today already new opportunities for the use and installation.

Screwed fittings with male threads for two the most popular diameters 14x2 and 18x2,5 have been introduced to the offer. Both types of fittings have male threads G1 / 2 „.



Currently, in addition to connectors for Platinum pipes available in the offer, new screwed fittings are introduced as an alternative for making screwed connections in **KAN-therm** Push Platinum system.





The current edition of the catalogue has begun the process of unification of multilayer pipes **KAN-therm Press**.

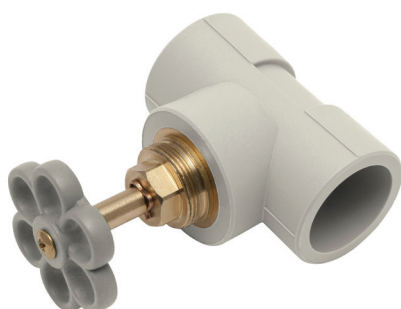
The change is to withdraw from the existing offer the multilayer pipes PE-RT/Al/PE-HD in a whole range of diameters (coils and bars). Now all pipes of this type are marked in the catalogue as „available until stocks run out“.

Instead of them, additional diameters of pipes PE-RT/Al/PE-RT have been introduced to the catalogue 03/2013, both in coils and bars, ensuring availability of this type of pipes in a whole range of diameters 14 – 40 mm.

Availability of multilayer pipes PE-X/Al/PE-X of diameters 50 – 63 mm remains unchanged.

New diameters of PE-RT/Al/PE-RT pipes available “off-the-shelf”.

Offer of **KAN-therm** PP System has been extended by new types of shut off valves welded directly to pipes. Previously used ball valves could not be used everywhere that is why shut off poppet valves have been introduced to the offer. Valves for diameters 20, 25 and 32 mm will be available in three options of knob:



shut off poppet valves with standard knob for surface mounting

shut off poppet valves with nickel-plated knob for flush mounting



shut off poppet valves with "mini" knob and spindle cover for flush mounting

## Manifolds, cabinets, supplementary elements

New, universal adapter for pipes  $\varnothing 15 \text{ G3/4"}$  has been introduced to the offer of **KAN-therm** system. Adapter can be used with all types of metal pipes available in **KAN** offer (copper, copper nickel-plated, **KAN-therm** Steel and **KAN-therm** Inox pipes) with diameter of 15 mm.



Adapter is used to make self-sealing screw connections Eurocone. The new construction enables to use it many time.

New extension for Eurocone connections has been introduced as a supplement. Extension can cooperate with all connections of this type available in **KAN-therm** offer.





In connection with the target unification of diameters of **KAN-therm** Steel and **KAN-therm** Inox Systems, we decided to change the intermediate diameter 64x1,5 mm in Steel System. Existing market demand indicates that the intermediate diameter between DN50 and DN65 is the ideal solution not for only hydraulic optimizing of installation, but also for significant reduction of investments costs.

In connection with the planned introduction of intermediate diameter in both Steel **KAN-therm** Systems, we introduce new diameter 66,7x1,5 mm to **KAN-therm** Steel System well known in the copper pipes range.

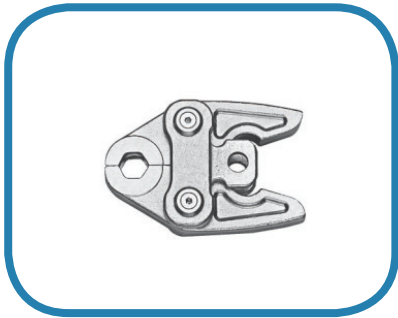
Moreover, the new diameter will increase the quantity of the transported medium in the installation. In the offer will be pipes as well as all necessary installation fittings such as threaded connections, flanges, elbows, tees, reducing tees, nipple reductions and couplings. Tools necessary for new diameter assembly will be also available.

To ensure product availability to customers, the change of diameters 64x1, 5 for 66,7 x1, 5 will take place in stages during the current year:

- Pipes and fittings with diameter 66,7x1,5 mm will be available in III quarter of 2013,
- Pipes and fittings with diameter 64x1,5 mm will be available by the end of this year.

At the same time, in order to enable our clients to select more easily the tools for assembly in **KAN-therm** Steel and **KAN-therm** Inox Systems, new table of compatibility and tool usage available in the offer for steel Systems appears in the catalogue.

The table is made in a such way that enables completing full tools (drivers, jaws and adapters) with their catalogue codes, without looking through assortment part of the catalogue.





# Underfloor heating

For the first time in the new catalogue we present modern automatics that controls surface heating. New elements of SMART line:

- modern electric terminal blocks (230 and 24 V) with modules LAN enabling configuration and full heating control by the Internet



- thermostats with LCD with optional temperature sensor of the floor cooperating with SMART plates wirelessly,



- completely new servomotors (230 and 24 V) SMART versions NO (electroless open) and NC (electroless closed) characterized by low power consumption. Servomotors cooperate with already well-known adapters available in **KAN-therm** offer.



Elements have been marked as „soon in the offer” in the latest edition of the catalogue. All operating, assembly and configuration instructions or folders showing possibility of automatics SMART we will soon place on our website.

We invite You to download new **KAN-therm** catalogue 03/2013

**KAN** Sp. z o.o.

St. Zdrojowa 51, 16-001 Białystok-Kleosin, tel. 0048 85 74 99 200, fax 0048 85 74 99 201,

e-mail: [kan@kan.com.pl](mailto:kan@kan.com.pl)